



**Towards newer, bigger milestones.**



# **VASCON ENGINEERS LIMITED GROUP PROFILE**

---

## **TECHNICAL FACT SHEET**



## CONTENTS

- Introduction
- Company Vision / Mission / Philosophy
- Integrated Management System Policy
- Major Clients
- Board of Directors
- Bankers and Team Composition
- Awards & Certifications
- Residential Projects
- Commercial Projects
- IT Projects
- Industrial Projects
- Institutional Projects
- Hospitality & MES Projects
- Machinery and Equipment
- TIN / CST Registrations
- Office Addresses



## ➤ INTRODUCTION

Vascon Engineers has more than 25 years of experience, conceiving, developing, constructing and managing varied projects. It is active in multiple sectors including residential, industrial, IT parks, malls and multiplexes, hospitality and community.

Right from its inception in 1986, Vascon has remained committed to applying the art of value-based aesthetics into the science of construction through efficient engineering. The Vascon team is mainly made up of engineers who are backed up by highly qualified specialists from various fields of management. Right from planning and procurement to testing and execution, every Vascon professional follows well-documented systems and procedures.

Today, Vascon's achievements range from sprawling factories to premium homes, from glittering malls to towering software parks and from classy hotels to elegant schools. One simple principle guides Vascon's approach to every project: "Understand the customer's needs and expectations; fulfil the needs and exceed the expectations." This is how Vascon has been able to strike the right balance between efficient engineering and thoughtful development in project after project, across the country.

"We don't just construct; we engineer success."

"We don't just build the future; we perfect it."





## COMPANY VISION

Be the engineers of choice for quality construction and path-breaking development projects all over India and Asia.

## COMPANY MISSION

Consistently exceed customer expectations, using engineering skills, development experience and a perseverant positive attitude in every project, regardless of size, type and location.

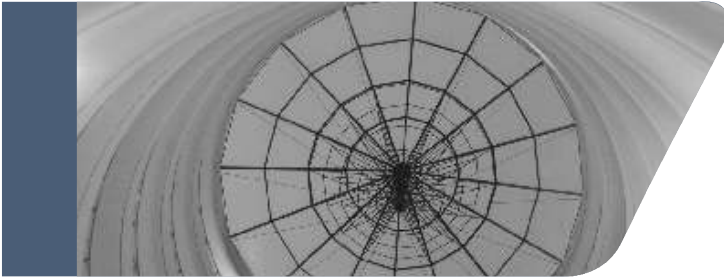
## PHILOSOPHY

The Board of Directors of the Company fully appreciates the importance of adopting high standards of corporate governance in all operations and processes throughout the Group. The Company is totally committed to Corporate Governance with the objective of generating long-term economic value for all the stakeholders.

The key elements in corporate governance are transparency, disclosure, supervision and internal controls, risk management, internal and external communications, high standards of safety, accounting fidelity, product and service quality. The Company ensures that the Board and the management of the Company are fully appraised with the affairs of the Company, in order to enable them in conducting the affairs of the Company efficiently and to meet the Company's obligations to the stakeholders.







## ➤ INTEGRATED MANAGEMENT SYSTEM POLICY

Vascon Engineers Limited is a construction company guided by mother nature and makes optimum use of the basic elements of nature.

Vascon believes man and nature should co-exist.

We, at Vascon Engineers Limited, are committed to manage our project activities, products and services, for delivering excellence in quality, whilst ensuring the occupational health, safety and well-being of our employees and minimising our impact on the environment.

To achieve this, we shall strive to

- Understand customer requirement and meet their expectations.
- Do the right things right, first time, every time.
- Conserve, preserve and improve the environment.
- Ensure occupational health & safety aspects of personnel, material and equipments at our workplace.
- Maintain safe and conducive environment at our workplace to achieve zero accident goal.
- Comply with all applicable legislations, regulations and requirements of international standards.

“Vascon believes in the simple & powerful rule...

Always give customers more than they expect.”





## MAJOR CLIENTS

### Industrial - Pharma

Associated Blenders Pvt. Ltd.  
Aventis Sanofi  
Blue Cross Laboratories Ltd.  
Bora Chemicals Pvt. Ltd.  
Charak Pharma Pvt. Ltd.  
Cipla Ltd.  
Dr. Reddy's Laboratories Ltd.  
Emcure Pharma  
Gopaldas Visram Pvt. Ltd.  
Hindustan Ciba Geigy Ltd.  
Lancet Pharma Pvt. Ltd.  
Legrande India  
Litaka Pharma Ltd.  
Medex Specialities Pvt. Ltd.  
Medispray Pvt. Ltd.  
Meditab Ltd.  
Modi Measurement Pvt. Ltd.  
Module Pharma Ltd.  
Nebumed Pharma Pvt. Ltd.  
Neo Analytical Lab Pvt. Ltd.  
Novacare Drug Specialities Pvt. Ltd.  
Okasa Ltd.  
Orion Remedies Pvt. Ltd.  
Oncocare India Pvt. Ltd.  
PharmaLink  
Syngenta Ltd.  
Sandoz Ltd.  
Twilight Pharma  
Zydus Nycomed

### IT & Software

Apex Computers  
BPTP  
Cyratron Ltd.  
Cybage Software Pvt. Ltd.  
Cummins Research and Technology Pvt. Ltd.  
IBM  
Mastek Ltd.  
Mphasis Ltd.  
Mind Crest (I) Pvt. Ltd.  
Nihilent Technology Pvt. Ltd.  
Nucleus Software  
Neelkanth Urban Developers Pvt. Ltd.  
PTC  
Red Hat India Pvt. Ltd.  
Saama Technologies India Pvt. Ltd.  
SI Services India Pvt. Ltd.  
Tietonator Tech Pvt. Ltd.  
Vulcan Infotech  
VirStrai-Technology Services Ltd.  
Ventura Software  
WNS  
Zensar Technologies Ltd.



## MAJOR CLIENTS

### Hotels

Four Points by Duet India  
Hyatt Regency  
Intercontinental Hotels  
Novotel  
Royal Orchids  
The Park  
Tristar Hotels Pvt Ltd

### Institutional/Hospitals

Goa Institute of Management  
Rotary Global Hospitals  
Sahyadri Hospital  
Shankara Eye Hospital  
Symbiosis Society  
Siddharameshwar Education Trust  
Sinhagad Technical Education Trust  
Savitribai Phule Shikshan Prasarak Mandal  
Continental Hospital Pvt. Ltd.

### Others

Adlabs Entertainment Pvt. Ltd.  
Adani Township  
Akshaya Homes  
ARAI  
Balekundre Institute of Technology  
Bhandari Industries Pvt. Ltd.  
Big Bazaar  
Dynajet Machineries  
Escapade Real Estate (P) Ltd.  
Ecstasy Realty Pvt. Ltd.  
GMR  
G. M. Partition  
HDIL  
Indian Oil Petronas  
Iris Properties Pvt. Ltd.  
Just Homes (I) Pvt. Ltd.  
Kirkoskar Press  
Kirkoskar Brothers Ltd.  
Kirkoskar Corrocoat  
Lifestyle  
Marigold Premises Pvt. Ltd.  
MES  
NBCC

North Town Estates Pvt. Ltd.  
Polyset Plastics Pvt. Ltd.  
Pune Kondhwa Realty Pvt. Ltd.  
Paradise Premises Pvt. Ltd.  
Pantaloons  
PWD  
Ramcon Realtors Pvt. Ltd.  
Ruby Mill Ltd.  
Rohan Lifescapes  
Shree Print & Paper (I) Ltd.  
Suzlon Energy Ltd.  
Sesa Goa  
Sandvik Asia Ltd.  
Sulzer India Ltd.  
Sahara School Holdings Ltd.  
Tata Housing  
Victor Reinz (I) Pvt. Ltd.  
Viola Premises Pvt. Ltd.  
Whirlpool India Ltd.  
Weikfield  
Woods Premises Pvt. Ltd..  
Yamazaki Mazak India



## ↘ VASCON BOARD OF DIRECTORS

### **R. Vasudevan**

Managing Director

holds a first class bachelor's degree in civil engineering from the Pune University. He has been awarded the Top Management Consortium Award of Excellence for the year 2005. He is responsible for the over-all management of our Company. He has over 34 years of experience in the construction industry.

### **V. Mohan**

Chairman

holds a bachelor's degree in commerce from the Madras University. He is also a fellow member of the Institute of Chartered Accountants of India. He is a practicing chartered accountant with more than 33 years of experience in the areas of audit and assurance services, company law, tax planning, tax representations and foreign exchange regulations with V Sankar Aiyar & Company, Chartered Accountants, where he is a partner.

### **K. G. Krishnamurthy**

Director

holds a bachelor's degree from the Indian Institute of Technology, Kharagpur, and a degree in business administration from the Jamnalal Bajaj Institute of Management, Mumbai. He has 33 years of experience in the areas of real estate, construction finance, property valuation and property search services.

### **Ameet Hariani**

Director

holds a degree in law and also a LLM degree from Bombay University. Besides being a member of the Bombay Incorporated Law Society and the Law Society, UK, he is also a member of the Singapore Law Society. He is a practicing lawyer with over 26 years of experience with Hariani & Co., Advocates & Solicitors, where he is a partner.

### **R. Kannan**

Director

holds a bachelor's degree in commerce from the Mumbai University. He has over 23 years of experience in the pharmaceutical industry. He is currently the Managing Director of Novacare Drug Specialities Private Limited in addition to being appointed on the board of various other companies.





## ➤ BANKERS



### STATE BANK OF INDIA

Industrial Finance Branch  
Wakdewadi, Pune - 411003



### UNION BANK OF INDIA

Camp Branch  
Pune - 411001



### CITIBANK

Camp Branch  
Pune - 411001



### HDFC BANK

Camp Branch  
Pune - 411001



### YES BANK

Bhandarkar Road Branch  
Pune - 411005



### CENTRAL BANK OF INDIA

M.G. Road Branch  
Mumbai - 400023

## ➤ TEAM COMPOSITION

Engineering / Projects	691	Purchase and Logistics	42
Finance / Accounts / SAP	171	MIS	08
HR and Admin	28	Safety / EHS	42
Company Secretary	5		





**VASCON**  
Engineering Possibilities

## AWARDS / CERTIFICATIONS

Asia's Best Employers  
Brand Award  
2011



Winner of 5th  
Indy's Award  
for  
Corporate Social  
Responsibility  
2011



Best Safety Performance  
Award for  
**Yamazaki Technology  
Centre Project Pune.**  
2011



Building of the Year  
for **V-tech IT Park,**  
Nashik  
BAI - Nashik  
2010



AESA (Architects, Engineers and Surveyor's  
Association) for **One Earth, Suzlon,** Pune  
2010

Well Equipped and  
Mechanised Site Award  
for **Ruby Mills,** Mumbai

BAI - Pune Centre  
2010



Indian Green Building  
Council (IGBC)  
**Suzlon - One Earth**  
Certification under  
Leadership in Energy &  
Environment Design  
2010



Eco Housing  
Certification  
for **Windermere**  
2010



Best IT Infrastructure  
Company Award

Govt. of Maharashtra  
2008





# Technical Fact Sheet



**ICSC**  
(International Council of  
Shopping Centers)  
Merit Award  
**Nucleus Mall**  
2006



**Brick and Mortar Award**  
(West Zone)  
of the "a+d" & Spectrum  
foundation  
**Nucleus & Marisoft III**  
2005



**Gold Crown Award**  
**Vista Do Rio, Goa**  
2008  
**RCI** (Resort  
Condominium International)  
**Vista Do Rio, Goa**  
2005



**Top Management Consortium (TMC)**  
Award of Excellence to  
R. Vasudevan (M.D.)  
2005



**AESA**  
(Architects, Engineers & Surveyor's Association)  
**Nucleus & Marisoft III**  
2005

**Building Industry Leadership Award**  
2007 - 2008  
**Most Trusted Brand from Amicus Enviro**  
Consultancy, New Delhi  
2008  
**Loksatta - Vasturang Award for "Zircon"**  
2007

**Construction World**  
**Top 10 Awards**  
2007



## BUILDERS ASSOCIATION OF INDIA (BAI) - Pune Centre

**Nucleus**  
Camp, Pune  
2005



**Zensar Technologies**  
Kharadi, Pune  
2004

**Marigold Casuarina**  
Kalyani Nagar, Pune  
2003

**Paradise Premises**  
Baner, Pune  
2000

## CERTIFICATIONS:

Integrated Management Systems for  
ISO 9001:2008 (QMS)  
ISO 14001:2004 (EMS)  
ISO 18001:2007 (OHSAS)

## Member:

CREDAI, Pune  
BAI, Pune  
MCCIA  
IGBC

**Symbiosis Institute of BBA & SID 2006**



## RESIDENTIAL PROJECTS completed

Particular	Location	Year of Completion	Area (In sq. ft)	Total value of work in Million (Rs)
Orchids	Pune	1991	45,200	24.00
Gayatri Society	Mumbai	1992	10,000	4.50
Tulips	Pune	1993	41,400	25.00
Poornima Society	Panvel	1994	30,000	13.50
Nova Cidade	Goa	1995	50,000	12.00
Woods	Pune	1995	61,850	37.00
Okasa Residence	Goa	1997	10,500	8.90
Anandvan Society	Nashik	1997	10,000	5.50
Facility for Cipla	Kurkumbh	1997	46,500	20.00
Deccan Enterprises	Mumbai	1998	41,400	29.00
Magnolia	Pune	1998	51,200	30.50
River Nest	Pune	1998	81,000	50.00
Facility for Industrial Oxygen Ltd.	Patalganga, Maharashtra	1999	10,800	5.00
Facility for Medispray	Goa	1999	7,000	5.50
Facility for Jai Bhuvan Builders	Goa	1999	58,000	25.00
Iris	Pune	1999	19,600	12.00
Facility for ANZ Grindlays	Mumbai	1999	60,000	42.00
Magnolia Annex	Pune	2002	17,300	11.00
Facility for Lancet Pharma	Goa	2004	42,200	35.00
Indeport Ltd.	Chiplun	2004	26,800	21.50
Viola	Pune	2004	2,20,000	159.00
Paradise	Pune	2004	1,40,000	168.00
Paradise Towers	Pune	2004	69,100	42.00
Eves Garden	Pune	2005	1,40,000	108.00
Palladium	Pune	2005	82,500	122.50
Golden Nest	Pune	2006	65,000	50.00
Marigold	Pune	2007	10,13,500	1100.00
Emaar - MGF	Mohali	2007	Monument Towers	27.50
Zircon	Pune	2008	4,00,000	440.00
Sayali	Daund	2009	25,200	15.00
Vista ( Phase I )	Nashik	2010	1,72,000	270.00
Willows ( Phase I )	Pune	2010	1,75,000	300.00
Township for Kirloskar Brothers Ltd.	Kirloskarwadi	2010	1,80,000	165.00

# Figures as per May 2011



## RESIDENTIAL PROJECTS ongoing

Particular	Location	Area (In sq. ft)	Total value of work in Million (Rs.)
Ramcons Residency	Goa	86,000	103.00
Vista - Phase II	Nashik	2,88,000	460.00
Willows - Phase II	Pune	3,84,000	614.00
Sayali	Daund	1,10,000	78.00
Villa Viviana	Chennai	2,06,000	150.00
Altimo (Altamount)	Mumbai	1,50,000	256.00
Ramkunj	Mumbai	72,000	91.00
Forest County (Phase I)	Pune	6,88,000	1100.00
Windermere	Pune	3,96,000	633.00
Pune Kondhwa Realty Private Limited	Pune	10,00,000	998.90
Prive - Tata Housing Development Company Ltd.	Lonavala	3,00,000	331.90
North Town for Unitech and Arihant	Chennai	8,15,000	472.00
Tulips - Phase 1	Coimbatore	75,000	115.00
Tulips - Phase 2	Coimbatore	2,71,000	433.00
Park Serene for BPTP Ltd.	Gurgaon	1,50,000	197.00
Amstoria - Flats and Villas	Gurgaon	12,00,000	1297.00
Park Mansion ( Medawas ) for BPTP	Gurgaon	2,25,000	328.00
Park Spacio	Gurgaon	4,00,000	520.00
Parthenon for Ecstasy Realty Pvt. Ltd.	Mumbai	586,000	558.00
Parthenon Phase II	Mumbai	19,00,000	1860.00
Meadows - Apartments for Adani Township	Ahmedabad	20,00,000	1320.00
Metropolis for Akshaya Homes	Chennai	2,00,000	200.00
January for Akshaya Homes	Chennai	7,00,000	900.00
Villas for Sahara	Lonavala	78,000	21.00
Xotech	Pune	70,000	112.00

### Take Over :

Vascon Engineers Limited has taken over GMP Technical Solutions Private Ltd, a leading company in modular clean room and office partitions with its core competencies in HVAC, Electrical and Building Management Systems (BMS). Vascon is now better positioned to offer turnkey solutions to its clients.

# Figures as per May 2011





## RESIDENTIAL PROJECTS completed



Eves Garden ↗



Marigold ↗



Zircon ↗



## RESIDENTIAL PROJECTS ongoing



Willows



Vista



Altamount



## RESIDENTIAL PROJECTS ongoing



Forest County ↗



Windermere ↗



Xotech ↗





## COMMERCIAL PROJECTS completed

Particular	Location	Year of Completion	Area (In sq. ft)	Total value of work in Million (Rs)
Shiv Towers	Goa	1995	18,200	10.00
Indoco House	Mumbai	1997	28,000	20.00
Phoenix	Pune	1997	32,000	21.00
Capital House	Goa	1997	35,500	16.00
Delphi	Pune	1998	10,200	8.00
Nucleus Mall	Pune	2005	3,14,000	420.00
Mariplex, Mall and Multiplex	Pune	2006	1,50,000	200.00
Lifestyle Mall	Pune	2007	77,000	100.00
Almonte Mall	Pune	2007	56,000	90.00
Adam's Court	Pune	2007	34,150	32.50
Big Bazaar Mall	Belgaum	2007	60,000	75.50
Pantaloon Mall	Nashik	2008	55,000	19.20
Matrix	Pune	2009	22,000	37.00
MLCP for Delhi International Airport (IGI)	Delhi	2010	12,00,000	2480.00

## COMMERCIAL PROJECTS ongoing

Particular	Location	Area (In sq. ft)	Total value of work in Million (Rs.)
Ruby Mills (Highrise)	Mumbai	15,50,000	1970.00
Neelkanth Palacia	Mumbai	8,50,000	919.00
Zenith	Pune	5,00,000	850.00
Nucleus	Belgaum	2,20,000	450.00
HDIL (Shell and core)	Mumbai	22,00,000	2020.00
Legislative Assembly Complex	Chennai	8,54,000	2109.00
Commercial Building for Apex Computers	Patto, Goa	37,800	80.00
Theme Park for Adlabs	Khalapur, Mumbai	4,96,500	630.00

# Figures as per May 2011



## COMMERCIAL PROJECTS



Nucleus ↗



HDIL ↗



Matrix ↗





## COMMERCIAL PROJECTS



Ruby Mill ↗



Neelkanth Palacia ↗



MLCP ↗



## IT PROJECTS completed

Particular	Location	Year of Completion	Area (In sq. ft)	Total value of work in Million (Rs)
Software Park Marisoft - I	Pune	2003	1,20,000	64.00
Software Park Marisoft-II	Pune	2004	1,12,000	90.00
Software Park Marisoft- III	Pune	2005	3,40,000	184.50
Marisoft Annexe	Pune	2005	1,61,000	118.00
Software Park for Zensar Technologies Ltd.	Pune	2006	2,00,000	80.00
Almonte IT Park	Pune	2007	1,65,000	230.00
Matrix	Pune	2009	4,13,000	520.00
E Park ( Pawansut Infotech )	Pune	2009	5,00,000	180.00
Vascon Weikfield IT Citi InfoPark ( Part )	Pune	2009	8,10,000	1050.00
V Tech IT Park	Nashik	2009	4,23,000	500.00
BPTP / i Park	Gurgaon, Delhi	2010	9,75,000	738.00

## IT PROJECTS ongoing

Particular	Location	Area (In sq. ft)	Total value of work in Million (Rs.)
V Tech I.T. Park	Nashik	2,88,000	350.00
Vascon Weikfield IT Citi InfoPark	Pune	3,45,000	690.00
Neelkanth IT Park	Mumbai	6,05,000	773.00
Phoenix	Pune	1,40,000	280.00

# Figures as per May 2011



## IT PARKS



BPTP ↗



Weikfield ↗



V-Tech ↗



## INDUSTRIAL PROJECTS completed

Particular	Location	Year of Completion	Area (In sq. ft)	Total value of work in Million (Rs)
Okasa Ltd.	Satara	1992	30,000	13.50
Cipla Ltd. (BD II Plant)	Kurkumbh, Pune	1993	30,000	12.00
Polyset Plastic	Goa	1995	68,800	25.00
Modi Measurements	Goa	1995	26,900	6.00
Cyratron	Goa	1995	21,500	5.00
Okasa Pharma	Goa	1996	1,33,000	50.00
Medispray Laboratories Pvt. Ltd.	Goa	1996	32,500	25.00
Cyratron	Goa	1996	19,000	5.00
Meditab Specialities Pvt. Ltd.	Goa	1998	45,500	34.60
Bhandari Industries Ltd.	Patalganga, Mumbai	1998	22,000	10.00
Kirloskar Press	Pune	1999	N.A.	5.00
Pharma Link	Alandi, Pune	1999	50,000	20.00
Iris Properties Pvt. Ltd.	Mumbai	2000	15,000	10.00
Nebumed Pharma Pvt. Ltd. (Pharma Plant)	Goa	2001	1,06,600	151.00
Facility for Medex Specialities Pvt. Ltd.	Goa	2001	1,31,800	173.00
Inhaled Technologies Pvt. Ltd. (Pharma Plant)	Goa	2001	1,11,600	149.00
Litaka Pharmaceuticals Ltd.	Talegaon, Pune	2001	25,000	12.50
Lancet Pharma	Goa	2001	1,75,000	139.00
Okasa Chemicals Pvt. Ltd.	Kurkumbh, Pune	2002	1,10,500	140.00
Novacare Drug Specialities	Goa	2002	27,600	19.00
Oncocare (Injection Plant)	Goa	2002	63,200	90.00
Jupiter Remedies	Daman	2002	30,000	19.85
Novacare	Goa	2003	25,600	22.50
Okasa Specialities Pvt. Ltd.	Goa	2003	1,03,700	117.50
Neo Analytical	Goa	2003	62,000	86.00
Oncocare Tablet Plant	Goa	2003	37,200	44.50
Blue Cross Laboratories Ltd.	Goa	2003	6,400	4.60
Lokranjan Breweries Pvt. Ltd.	Pune	2003	17,000	12.00
Tablet, Utility for Medule Pharma Pvt. Ltd.	Goa	2003	1,30,200	122.00
Cipla Ltd. (Steroid Plant)	Kurkumbh, Pune	2003	11,800	11.60
Orion Remedies Pvt. Ltd. (Bulk Drug)	Kurkumbh, Pune	2004	1,50,000	145.00

# Figures as per May 2011





# Technical Fact Sheet



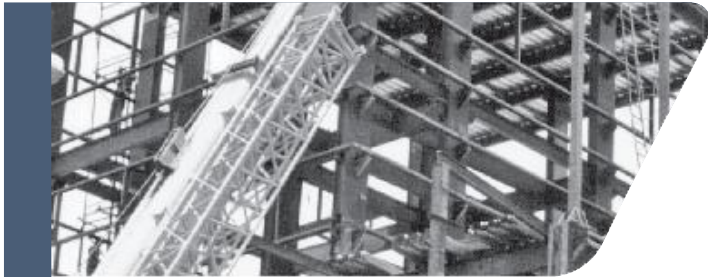
## INDUSTRIAL PROJECTS completed

Cont.

Particular	Location	Year of Completion	Area (In sq. ft)	Total value of work in Million (Rs)
ARAI	Pune	2004	17,000	15.50
Vashisti Detergents Ltd. (Fabrication)	Ratnagiri	2004	25,000	12.50
Okasa Analytical	Daman	2004	34,000	20.00
Cipla Ltd. (Hormone Plant)	Goa	2004	67,600	61.00
Blue Cross Labs Ltd.	Nashik	2005	30,000	15.00
Nebumed Pharma (Expansion)	Goa	2005	4,100	5.00
Cipla Ltd. (Lypholizer Plant)	Goa	2005	1,24,000	140.00
Cipla Ltd. (BD IV Plant)	Kurkumbh, Pune	2005	18,000	14.50
Cipla Ltd. (Shipper Store)	Goa	2005	37,800	42.00
Inhaled Technology (Expansion)	Goa	2005	23,400	29.50
Shree Print & Pack	Goa	2005	11,800	9.00
Cipla Ltd Bulk Drug (V) Plant	Kurkumbh, Pune	2005	1,10,000	101.00
Golden Cross Pharma	Daman	2005	30,000	16.80
Cipla Ltd. (Pharma plant / Chemical store)	Kurkumbh, Pune	2005	40,000	39.80
Cipla Ltd. (Chemical store)	Kurkumbh, Pune	2005	27,000	24.20
Sandvik Asia Ltd.	Chiplun	2005	15,000	15.00
Advance Remedies	Daman	2005	72,000	56.00
Cipla Ltd. (New capsule plant)	Goa	2005	5,000	5.50
Okasa Ltd. (QC & Guest House)	Goa	2006	2,300	3.00
Charak Pharma Ltd.	Baddi, H.P.	2006	35,000	37.00
R & D Building for Syngenta Ltd.	Goa	2006	75,300	86.00
Cipla Ltd. (BD III Plant)	Kurkumbh, Pune	2006	13,300	12.00
Lancet Pharma Pvt. Ltd. (Ext.& Hall)	Goa	2007	25,500	30.00
Twilight Pharma	Baddi, H. P.	2007	43,000	40.00
G. M. Partition	Baddi, H.P.	2007	1,00,000	67.00
Formulation Plant for Dr. Reddy's Lab	Baddi, H.P.	2007	2,20,000	190.00
Cipla Ltd. (Bulk Drug / Formulation Plant)	Patalganga	2007	3,50,000	650.00
Cipla Ltd. (Oncocare Expansion)	Goa	2007	5,500	5.50
Formulation Plant for Cipla Ltd.	Baddi, H.P.	2007	2,75,000	330.00
Cipla Ltd. Pharma Plant (API)	Kurkumbh, Pune	2007	1,20,000	140.00
Dynajet Machinery India Pvt. Ltd.	Goa	2007	1,10,000	80.00
Cipla (R & D / Misc)	Vikhroli, Mumbai	2007	70,000	90.00
Cipla Ltd. (Solvent Store)	Goa	2008	5,000	4.90
Professional Oral Care Products	Goa	2008	4,500	4.50
Weikfield (Lonikand Factory)	Pune	2008	40,000	30.00

# Figures as per May 2011





## INDUSTRIAL PROJECTS completed

Cont.

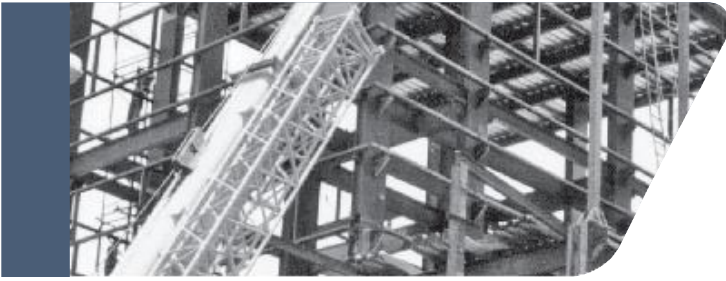
Particular	Location	Year of Completion	Area (In sq. ft)	Total value of work in Million (Rs)
Formulation Plant for Emcure Pharma	Pune	2008	2,00,000	160.00
Cipla Power Plant	Goa	2008	18,000	19.50
Sanofi-Synthelabo (I) Ltd. (Formulation Lab.)	Goa	2008	40,000	100.00
Kirloskar Corrocoat	Kirloskarwadi	2008	30,000	33.00
Cipla Ltd. (Lozenges)	Baddi, H.P.	2009	50,000	40.00
FM Propack Pvt. Ltd.	Baddi, H.P.	2009	30,000	20.00
Cipla Ltd. (Shipper Store)	Baddi, H.P.	2009	16,000	25.00
Sesa Goa Beneficiation Plant	Goa	2009	Mining Dev. Work	30.70
Civil work for IBM India Pvt. Ltd.	Pune	2009	**	12.60
Factory for Victor Reinz (I) Pvt. Ltd.	Talegaon, Pune	2009	70,000	90.00
FFS, PFS, Utility Tablet (SEZ) for Cipla Ltd.	Indore	2009	15,74,000	1446.00
API facility for Zydus Healthcare Pvt. Ltd.	Mumbai	2010	57,000	68.50
Factory / Office Building for Sulzer (I) Ltd.	Pune	2010	65,000	125.00
Yamazaki Mazak India	Pune	2011	1,50,000	90.00
Legrand (India) Pvt. Ltd.	Nashik	2011	35,000	65.00

## INDUSTRIAL PROJECTS ongoing

Particular	Location	Area (In sq. ft)	Total value of work in Million (Rs.)
Expansion and Road works for Hormone	Goa	41,000	23.80
LPG Exp / Imp Terminal for Indian Oil Petronas	Chennai	53,700	119.00
Formulation Plant for Dr. Reddys Lab.	Baddi, H. P.	1,00,000	134.00
Civil work for QC/Canteen/Boiler for Cipla Ltd.	Patalganga	71,400	104.00
New Drum Shed for Cipla Ltd.	Kurkumbh	10,500	15.50
Civil work for Novacare	Goa	49,400	47.50

**Note :** 1. Maintenance sites and individual bungalows not included.  
2. All areas rounded to 50 sft.  
3. All costs rounded to Rs. 0.05 million.

# Figures as per May 2011



**VASCON**  
Engineering Possibilities

## INDUSTRIAL PROJECTS

↳ Kirloskar Corrocoat



Mazak-India ↵



↳ Dr. Reddy's



SEZ Cipla ↵

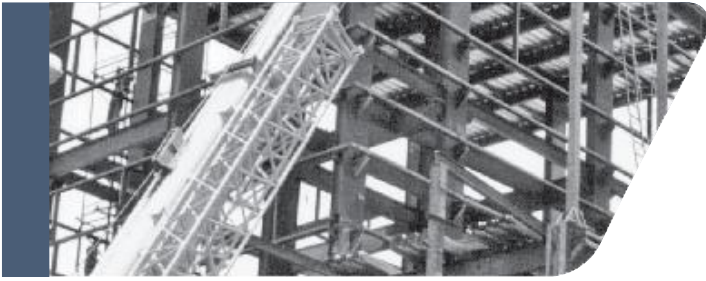


↳ Syngenta



Legrande ↵





## INDUSTRIAL PROJECTS

Sanofi Aventis



Dynajet



Victor Reinz



Sulzer India



Cipla Ltd.



Sulzer India





## ➤ INSTITUTIONAL PROJECTS completed

Particular	Location	Year of Completion	Area (In sq. ft)	Total value of work in Million (Rs)
Cipla Cancer Aids, Warje	Pune	1999	40,000	23.00
Chest R & D Center for Cipla Ltd.	Pune	2003	30,000	30.00
Hospital for KMMT (Sahyadri group)	Pune	2005	90,000	60.00
R & D Building for Cipla	Mumbai	2006	65,000	50.00
College for Symbiosis	Pune	2007	3,00,000	240.00
Corporate Campus for Suzlon	Pune	2009	8,21,000	1420.00
Engineering College for Siddarameshwar Education Trust's BIT	Belgaum	2010	72,000	61.00
Hospital & College for Rotary Global Hospital	Pune	2010	1,20,250	54.50

## ➤ INSTITUTIONAL PROJECTS ongoing

Particular	Location	Area (In sq. ft)	Total value of work in Million (Rs.)
Engineering College, Hostel, Mess, Dining and Staff quarters for Symbiosis	Pune	2,89,000	476.00
Engineering College, School, Hostel, Mess for Savitribai Phule Shikshan Prasarak Mandal	Korti, Pandharpur	10,25,000	888.00
Kirloskar Institute of Management Studies (Phase I)	Maval, Pune	1,36,000	220.00
Medical and Para Medical College for NBCC	Chennai	79,600	180.60
Office and Hostel block for Goa Institute of Management	Goa	1,70,000	389.00
Extension for school building for Symbiosis	Nashik	24,000	31.00
Hostel, mess and Institutional building for Sinhgad Technical Education Society	Ambegaon, Pune	5,21,000	500.00
Hostel, Staff and Mess buildings for Savitribai Phule Shikshan Prasarak Mandal	Kegaon, Solapur	3,94,000	360.00
Multi Speciality Hospital for Continental Hospital	Hyderabad	11,00,000	482.5
International school for Sahara Holdings	Lonavala	1,60,000	315.00
School for Sinhgad Technical Education Society	Warje, Pune	4,00,000	320.00
ESIC Hospital	Parel, Mumbai	2,50,000	1300.00
Shankara Eye Hospital	Ludhiana	50,000	100.00





## ➤ INSTITUTIONAL / HOSPITAL PROJECTS



Suzlon ↗

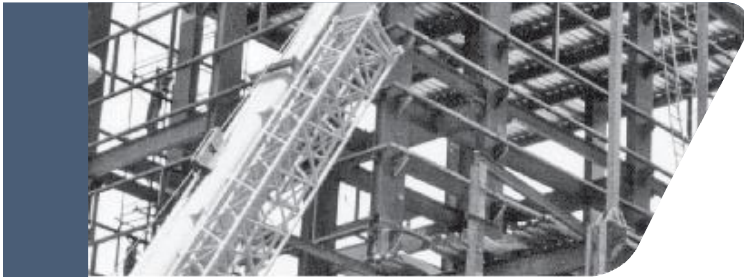


Symbiosis ↗



Sahyadri Hospital ↗





**VASCON**  
Engineering Possibilities

## ➤ HOSPITALITY PROJECTS completed

Client	Location	Total Area in Sq. Ft.	Total Rooms	Value of Work in Million Rs
Golden Suites	Pune	54,000	71 suites	150.00
Royal Orchids	Pune	71,000	118	180.00
Vista-do-rio	Goa	43,400	65 suites	80.00
Galaxy Resorts	Goa	23,700	41	100.00
Phoenix - Service Apartments	Pune	60,000	72 and 3 row houses	71.40
Four Points by Duet India Pvt. Ltd.	Pune	1,85,000	232	300.00
Service Apartments for Tristar Hotels (P) Ltd.	Pune	70,000	63	47.00
Hyatt Regency	Pune	4,00,000	280 and 75 service apt.	1,000.00

## ➤ HOSPITALITY PROJECTS ongoing

Client	Location	Total Area in Sq. Ft.	Total Rooms	Value of Work in Million Rs
Park Hotel Group	Pune	2,30,000	250	450.00
Novotel - An Accor Group	Pune	2,00,000	300	320.00
Holiday Inn	Pune	1,75,000	187	1200.00
Caspia Hotels	Coimbatore	1,34,000	129	588.00

## ➤ MILITARY ENGINEERING SERVICES PROJECTS completed

Particular	Location	Year of Completion	Area (In sq. ft)	Total value of work in Million (Rs)
Infrastructure for Wrestling Node, ASI	Pune	2008	18,000	15.00
OTM Accn for 454 Ors and 20 JCOs at CME FOR MES, Phase 1	Garrison Engineers, Pune	2009	80,000	85.00
6 Major/5 Captain & allied services at AFMC	Pune	2009	20,000	15.00

## ➤ MILITARY ENGINEERING SERVICES PROJECTS ongoing

Particular	Location	Area (In sq. ft)	Total value of work in Million (Rs.)
Married accommodation Project ( DG MAP )	Pune	4,00,000	370.00



## ↘ HOSPITALITY PROJECTS



Hotel Sheraton ↘



Hotel Holiday Inn ↘



Hotel Hyatt ↘



## INVENTORY OF MACHINERY AND EQUIPMENT

Tower Cranes	17 Nos
Boom Placers	2 No
Batching Plants	6 Nos
Concrete Pumps	55 Nos
Excavators	10 Nos
Dumpers	10 Nos
Tractors	13 Nos
Hydra Cranes	4 Nos
Generators	34 Nos
Rollers	1 No
Mini Batching Plants	20 Nos
Transit Mixer	10 Nos
Concrete Mixer	152 Nos
Weigh Batching Machines	65 Nos
Tower Hoist	59 Nos
Stirrup making Machines	1 No
Reinforcement Cutting / Bending Machines	186 Nos
Cube Testing Machines	40 Nos
Tremix Machine Set	10 No
Concrete Block making Machines	12 Nos
Total stations	7 Nos
Theodolites	45 Nos
Vibrators MK	8 Nos
Dewatering / Curing Pumps above 5 HP	89 Nos
Sand Screening / Washing Machines	27 Nos
Air Compressor	11 Nos
Scaffolding material	8,00,000 sft.
Steel plates, steel props, plywood shuttering	12,00,000 sft.
Special purpose shuttering	4,00,000 sft.

# Figures as per May 2011





## ➤ TIN / CST REGISTRATION NOS.

<b>Maharashtra</b>	MVAT TIN NO. CST TIN NO. ST NO. PAN NO. TAN NO. PF NO. ESIC NO.	27630000232V W.E.F 01.04.2006 27630000232C W.E.F 01.04.2006 AAACV1249FST003 AAACV1249F PNEV04048C MH/37435 W.E.F. 31.03.1989 33-31-43257-101
<b>Himachal Pradesh</b>	LST NO. CST NO.	02030200553 W.E.F. 26.04.2004 SOL-CST-8051 W.E.F. 26.04.2004
<b>Goa</b>	TIN NO. CST NO.	30950102099 W.E.F. 01.04.2005 P/CST/4407 W.E.F. 01.11.1993
<b>Karnataka</b>	TIN NO. CST NO.	29030717844 W.E.F. 19.09.2006 29030717844 W.E.F. 19.09.2006
<b>Punjab</b>	TIN NO. CST NO.	03202026758 W.E.F. 28.11.2006 03202026758 W.E.F. 28.11.2006
<b>Haryana</b>	TIN NO. CST NO.	06421827689 W.E.F. 06.10.2007 06421827689 W.E.F. 06.10.2007
<b>Madhya Pradesh</b>	TIN NO. CST NO.	23240104836 W.E.F. 17.10.2007 23240104836 W.E.F. 17.10.2007
<b>Tamil Nadu</b>	TIN NO. CST NO.	33251781844 W.E.F. 01.07.2008 268907 W.E.F. 01.07.2008
<b>Delhi</b>	DVAT TIN NO. CST NO.	07420354873 W.E.F. 17.02.2009 07420354873 W.E.F. 17.02.2009
<b>Andhra Pradesh</b>	TIN NO. CST NO.	28947412709 W.E.F. 01.02.2010 28947412709 W.E.F. 01.02.2010
<b>Ahmedabad</b>	TIN NO. CST NO.	24075603594 W.E.F. 03.02.2011 24575603594 W.E.F. 03.02.2011
<b>Uttar Pradesh</b>	TIN NO. CST NO.	09865711953 W.E.F. 30.04.2011 09865711953 W.E.F. 30.04.2011



# Technical Fact Sheet



## OFFICE ADDRESS

### Corporate Office

'Phoenix'

Bund Garden Road, Camp

Pune - 411 001

Tel +91 (20) 30562100 / 200 / 300 / 500

Fax +91 (20) 26131071

### Regd. Office

15-16, Hazari Baug

L.B.S. Marg, Vikhroli West

Mumbai - 400 083

Tel:+91 (22) 25781143 / 24787419

Fax +91 (22) 25796333

### Coimbatore Office

SF No. 555/1

Hindustan College Road

Souuri Palayam

Coimbatore - 641 028

Tel:+91 (0422) 4623111

### Goa Office

511, Shiv Towers

Patto Plaza, Panaji

Goa - 403 001

Tel: +91 (0832) 3044877 / 3

Fax: +91 (0832) 2438561

### Hyderabad Office

C/o Multi Speciality Hospital

Continental Hospital Ltd.

Plot No. 3, Road No. 2,

IT Park, Behind Ista Hotel

Nanakramguda, Hyderabad - 500 019

Phone : 09603347614

### Chennai Office

2nd Floor, Lanco House

25 G.N. Chetty Road

Opp. Bharatiraja Hospital

Adjacent to Hotel Peninsula

T. Nagar, Chennai - 600 017

Phone : +91 (044) 43403600

Mobile : 9500067210

### V-Tech IT-Park

Office No. C-101, S.No 113/2

Wadala Shivar, Indira Nagar

Nasik - 422 009

Tel : +91 (0253) 3017302 / 5

Fax: +91 (0253) 3017301

### Gurgaon Office

407-408, 4th Floor,

DLF City Court, Near Metro Station

Sikanderpur, Gurgaon 122 004 (Haryana)

Phone : +91 (0124) 4847250

Fax : +91 (0124) 4847259



# Vascon Engineers Ltd. awarded by The Asia's Best Employer Brand Awards, 2011

International Recognition for exemplary performance



Vascon Engineers Limited has received one of the most prestigious awards in an International Forum organized by The Employer Branding Institute, World HRD Congress. The Company has been recognized as Asia's Best Employer for Managing Health at Work Category 2011. The event was organized in Suntec Singapore which received wide entries from over 18 countries such as China, Hong Kong, India, Japan, Malaysia, Pakistan, Philippines, Saudi Arabia, Singapore, Sri Lanka, Thailand, UAE etc.

Vascon is proud of this awards as it comes as a recognition of our activity towards our extended family.



**VASCON**  
Engineering Possibilities

Corporate Office: 'Phoenix' Bund Garden Road, Camp, Pune – 411 001.  
Tel +91–20–30562100 / 200 Fax +91–20–26131071.  
email: [corporate@vascon.com](mailto:corporate@vascon.com) Website: [www.vascon.com](http://www.vascon.com)